

奢华艺术之美



8 St Thomas

永久产权 · 现楼发售 · 外国人可购买

“艺术不是一种有形的物品、而是一种方法、
一种美丽、亲切、高尚、深刻的表达方法。”

— 阿尔伯特·哈伯德



在 8 St Thomas, 高尚与优雅兼具完美结合。8 St Thomas 融合设计与美学, 彰显出高品质住宅应有的时尚建筑风格。

S

幸福的交响乐



Artist's Impression



迅速到达乌节路，滨海湾金融中心，以及著名学府。就近体验探索无限的选择。

无缝的交通连接



Marina Bay Sands & Marina Bay Financial Centre



Orchard Road



Actual Photo

沐浴在绚丽的景色中，从滨海湾金沙和乌节的天际线中，您可以欣赏到无与伦比的旭日东升和夕阳西下。

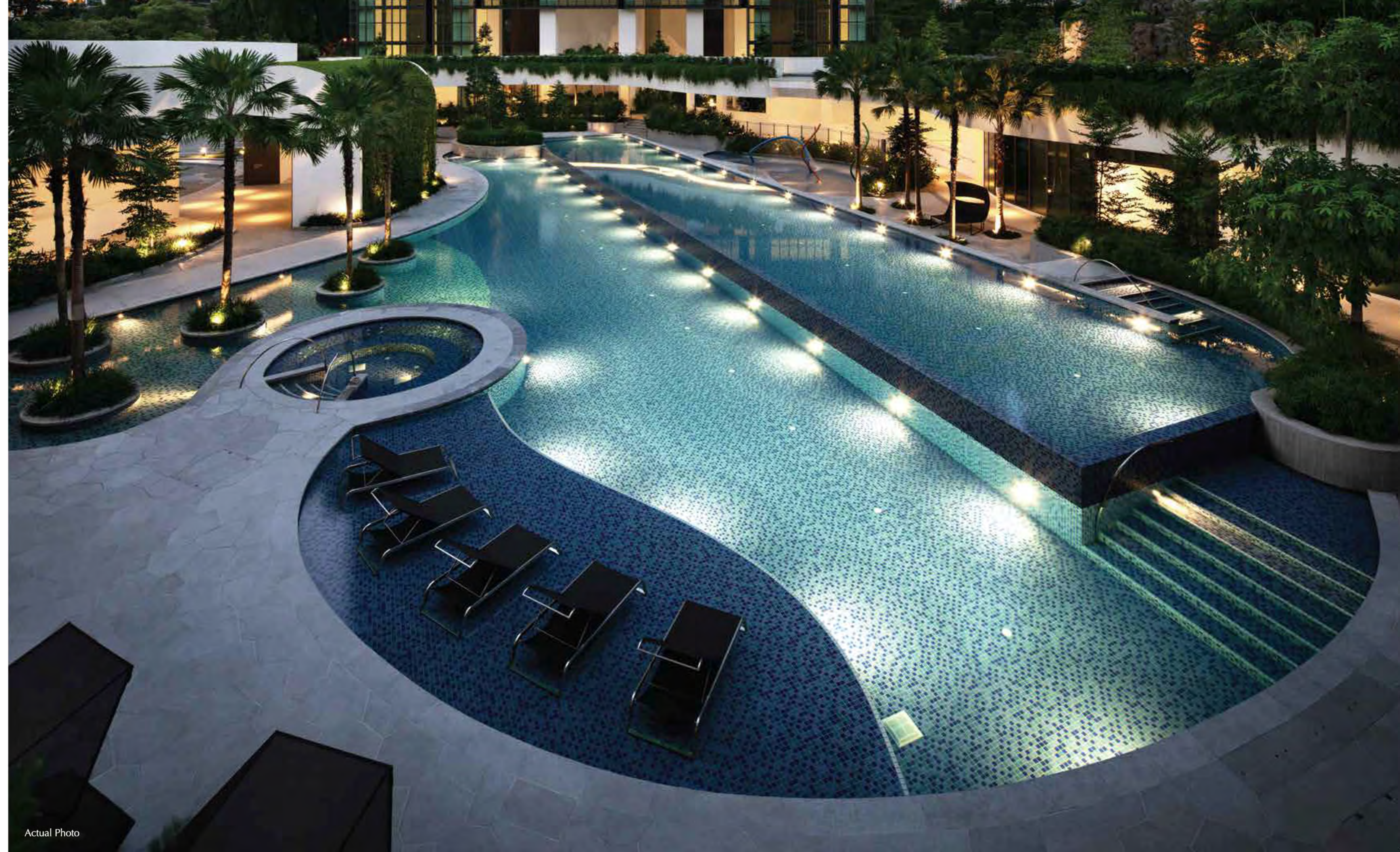
旖旎风光，
风月无边



S

愉悦的氛围

尽情徜徉于蔚蓝泳池，
以及窝进大自然的舒适
怀抱。



率先感受
与世界共舞



Actual Photo

S

宽敞的居所



Actual Photo

享受无处不在的宽敞空间和无限美景。与完美的世界杰作融入理想和时尚生活的精致触感。

在自然宜居的环境中追寻生态天堂般的心灵抚慰。8 St Thomas 不仅在其环境设计上运用大自然的元素，而且还获有新加坡建设局所颁发的 "绿色建筑标志金奖" (BCA Green Mark Gold)。


S 永续生活

- 

能源效率

 - 节能冰箱
 - 公共区域在白天享有大量的天然采光，夜晚则是运用移动感应照明。
- 

用水效率

 - 节水洗衣机和配件
 - 收集的雨水会被过滤，然后用于园林灌溉。
- 

其他环保设施

 - 可为电动车充电的绿色停车区
 - 提供指定的脚踏车停放区

空中露台

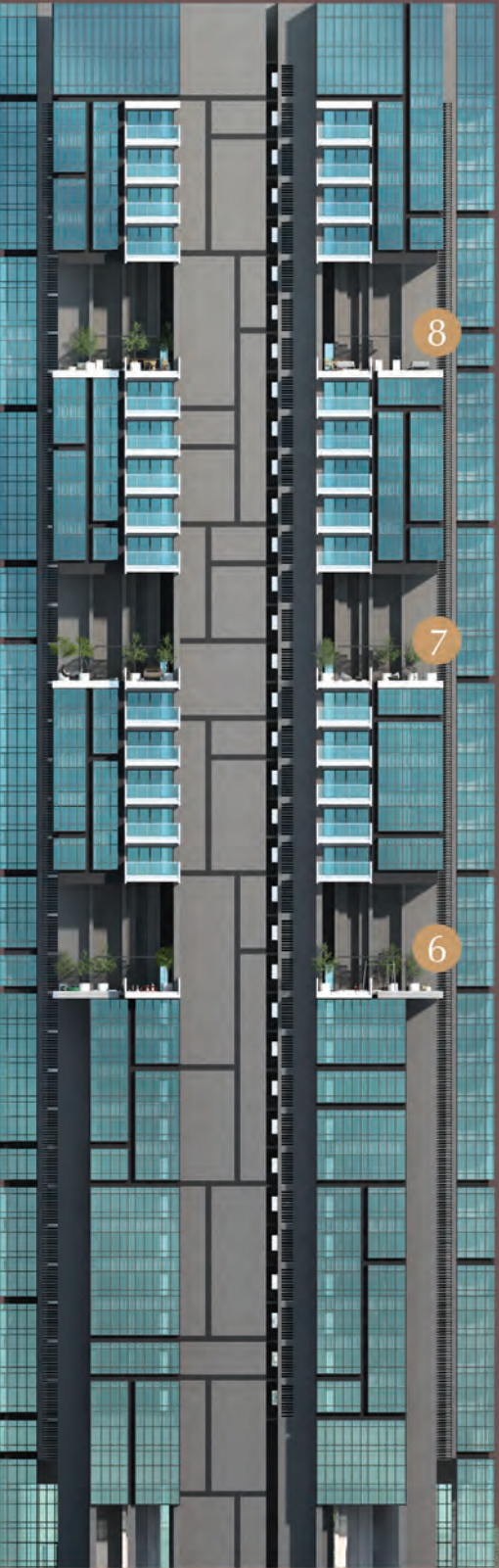
您可以在位于第8座住宅大楼的主题花园中尽情放松、感受大自然所带来的闲逸慢时光或到第10座住宅大楼进行自己的休闲活动。

8 圣多马径 天空花园

- | | |
|-----------------------|-----------------------|
| 1 Level 2
Gusto | 4 Level 23
Toccare |
| 2 Level 9
Colore | 5 Level 30
Suona |
| 3 Level 16
Profumo | |

10 圣多马径 健身和休闲厅

- | |
|----------------------------|
| 6 Level 13
游戏休息室、儿童探索甲板 |
| 7 Level 21
风景甲板、瑜伽和健身甲板 |
| 8 Level 29
鸡尾酒休息室、美食餐饮 |



Artist's Impression

社交空间

畅享您在家以外的专属品味生活。随我们一起在满足各种需求的休闲空间中、打造专属的四季美景。



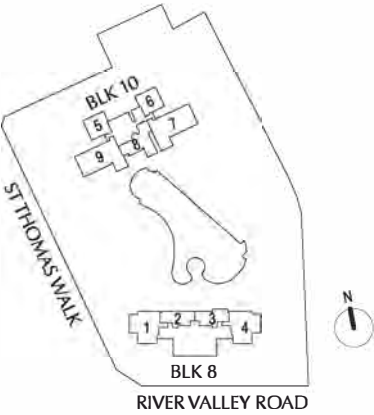
图例

- | | | | |
|---|-------|---|------------|
| a | 礼宾接待处 | m | 健身角落 |
| b | 入口广场 | n | 私家网球场 |
| c | 日光浴甲板 | o | 保安室 |
| d | 水景 | p | 行人侧门 |
| e | 户外泳池 | q | 活动宴会厅 |
| f | 池畔泳池 | r | 健身室 |
| g | 水疗亭 | s | 蒸汽房 |
| h | 儿童泳池 | t | 花园小径（上层甲板） |
| i | 陆地水甲板 | u | 卫生间/更衣室 |
| j | 闲瑕池 | # | 变电站和发电机组 |
| k | 花园烧烤亭 | ◇ | 垃圾收集处 |
| l | 儿童游乐区 | | |

示意图

Legend

- 1 BEDROOM
- 2 BEDROOM
- 3 BEDROOM
- 4 BEDROOM
- 4 BEDROOM DUAL KEY
- PENTHOUSE



8 St Thomas Walk Singapore 238146

	01	02	03	04
35	PH1 #35-01			PH2 #35-03
34	D1A			D2A
33	D1B			D2B
32	D1B			D2B
31	D1B			D2B
30	D1B	SKY TERRACE		D2B
29	D1B			D2B
28	D1B			D2B
27	B6	B5		DK1
26	B6	B5		DK1
25	B6	B5		DK1
24	B6	B5		DK1
23	B6	B5	SKY TERRACE	DK1
22	B6	B5		DK1
21	B6	B5		DK1
20	B6	B5		DK1
19	B6	B5		DK1
18	B6	B5		DK1
17	B6	B5		DK1
16	B6	B5	SKY TERRACE	DK1
15	B6	B5		DK1
14	C2	A4		DK1
13	C2	A4		DK1
12	C2	A4		DK1
11	C2	A4		DK1
10	C2	A4		DK1
09	C2	A4	SKY TERRACE	DK1
08	C2	A4		DK1
07	C2	A4		A5C3
06	C2	A4		A5C3
05	C2	A4		A5C3
04	B3	A2		A3B4
03	B3	A2		A3B4
02	B3	A2	SKY TERRACE	A3B4
LIFT LOBBY				
BASEMENT CARPARK				

10 St Thomas Walk Singapore 238102

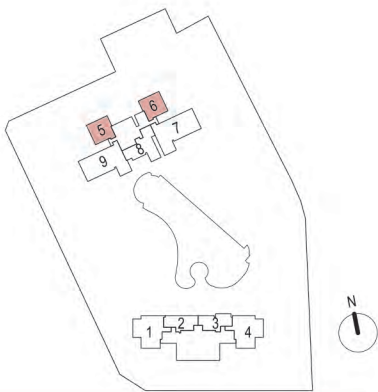
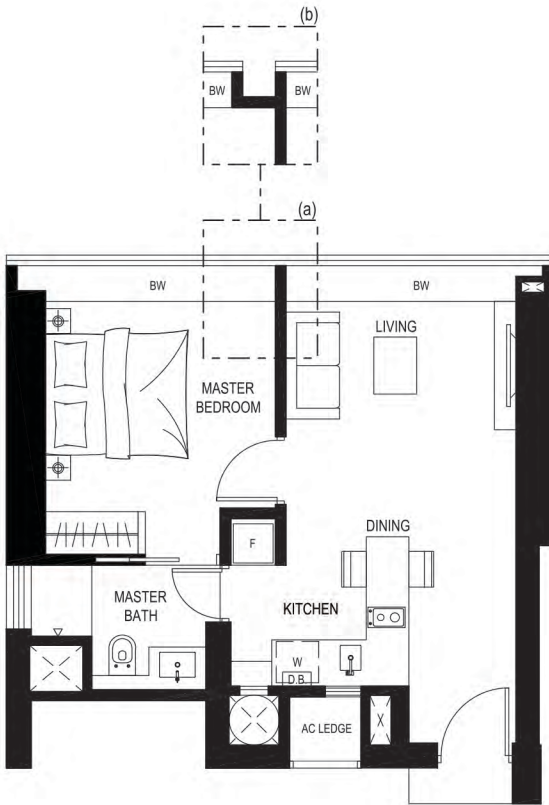
05	09	08	07	06	
B1	C1	B2	C1	B1	35
B1	C1	B2	C1	B1	34
B1	C1	B2	C1	B1	33
B1	C1	B2	C1	B1	32
	C1	B2	C1		31
	C1	B2	C1		30
SKY TERRACE	C1	B2	C1	SKY TERRACE	29
B1	C1	B2	C1	B1	28
B1	C1	B2	C1	B1	27
B1	C1	B2	C1	B1	26
B1	C1	B2	C1	B1	25
B1	C1	B2	C1	B1	24
	C1	B2	C1		23
	C1	B2	C1		22
SKY TERRACE	C1	B2	C1	SKY TERRACE	21
B1	C1	B2	C1	B1	20
B1	C1	B2	C1	B1	19
B1	C1	B2	C1	B1	18
B1	C1	B2	C1	B1	17
B1	C1	B2	C1	B1	16
	C1	B2	C1		15
	C1	B2	C1		14
SKY TERRACE	C1	B2	C1	SKY TERRACE	13
A1	C1	B2	C1	A1	12
A1	C1	B2	C1	A1	11
A1	C1	B2	C1	A1	10
A1	C1	B2	C1	A1	09
A1	C1	B2	C1	A1	08
A1	C1	B2	C1	A1	07
A1	C1	B2	C1	A1	06
A1	C1	B2	C1	A1	05
A1	C1	B2	C1	A1	04
A1	C1	B2	C1	A1	03
	C1	B2	C1		02
LIFT LOBBY					
BASEMENT CARPARK					

1-Bedroom



A1 户型

47 平方米 / 506 平方英尺
#03-05 to #12-05
#03-06* to #12-06*

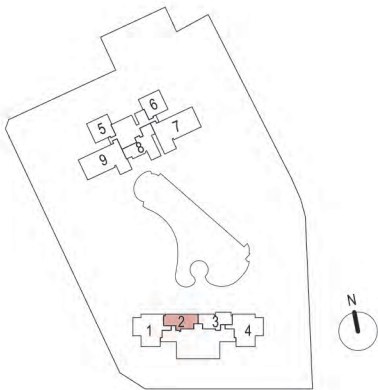
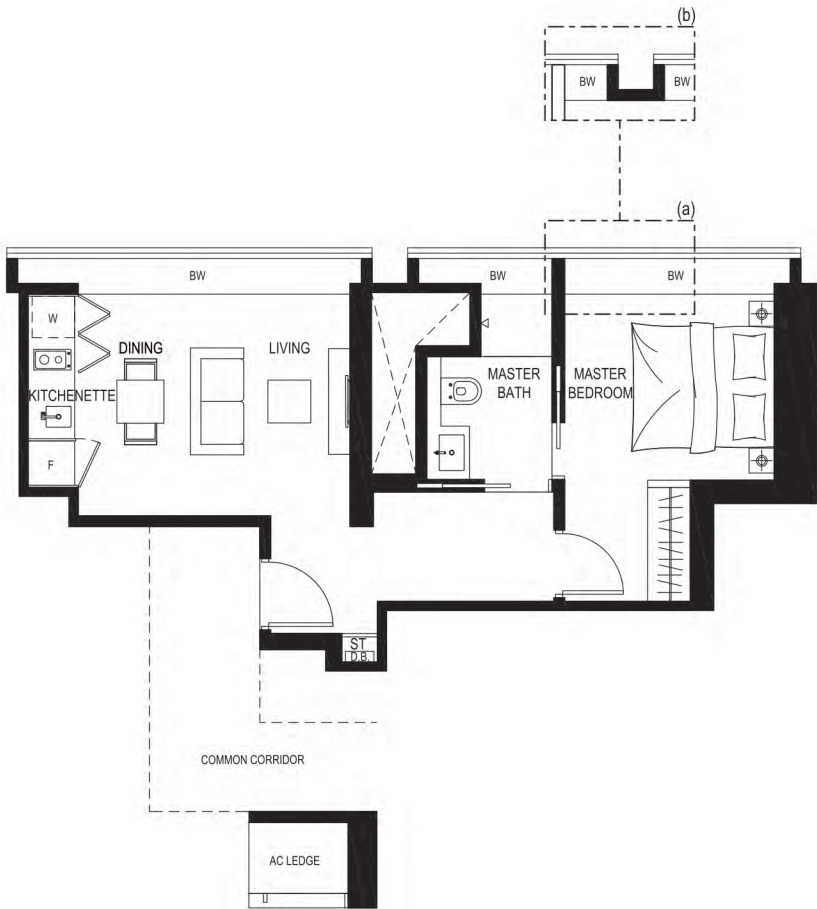


(a) Applicable to: #03-05 to #07-05, #08-06* to #12-06* (b) Applicable to: #08-05 to #12-05, #03-06* to #07-06*

Note : - handed/ mirrored units not shown *represent mirrored unit
Area includes A/C ledge, balcony and void (where applicable). Plans are approximate measurements and are subject to amendments as may be required or approved by relevant authorities.

A2 户型

47 平方米 / 506 平方英尺
#02-02 to #04-02



(a) Applicable to: #02-02 to #03-02 (b) Applicable to: #04-02

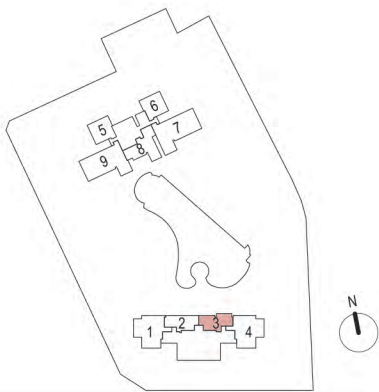
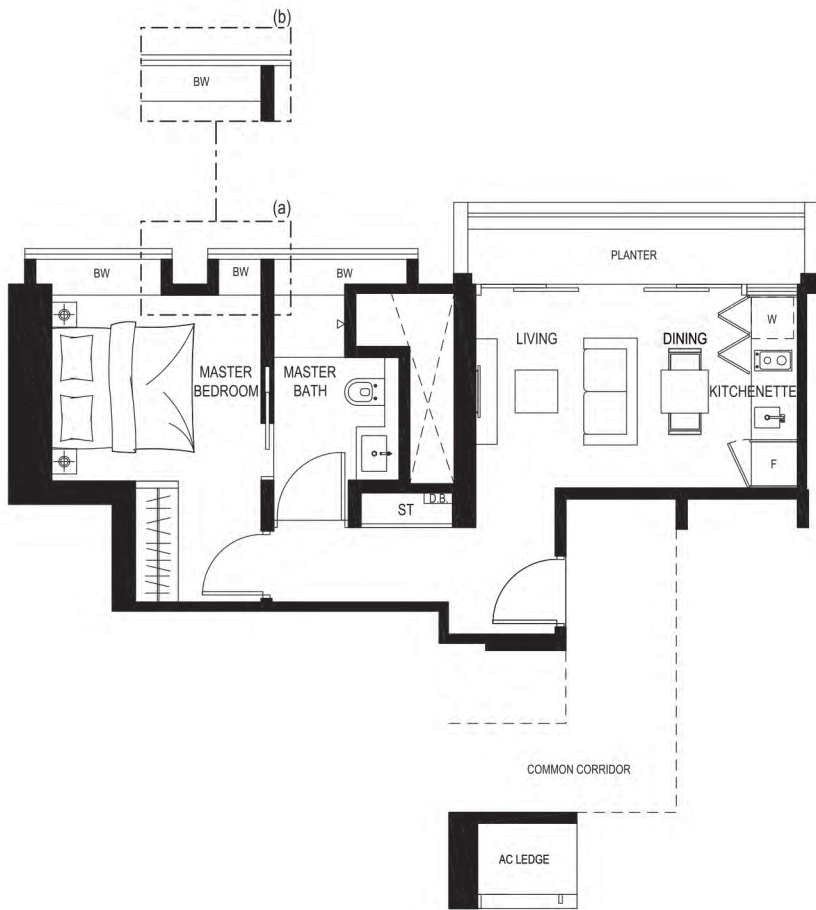
Area includes A/C ledge, balcony and void (where applicable). Plans are approximate measurements and are subject to amendments as may be required or approved by relevant authorities.

1-Bedroom



A3 户型

48 平方米 / 517 平方英尺
#02-03 to #04-03

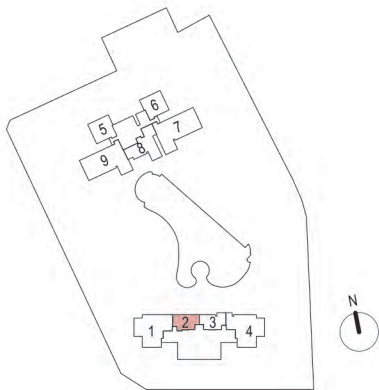
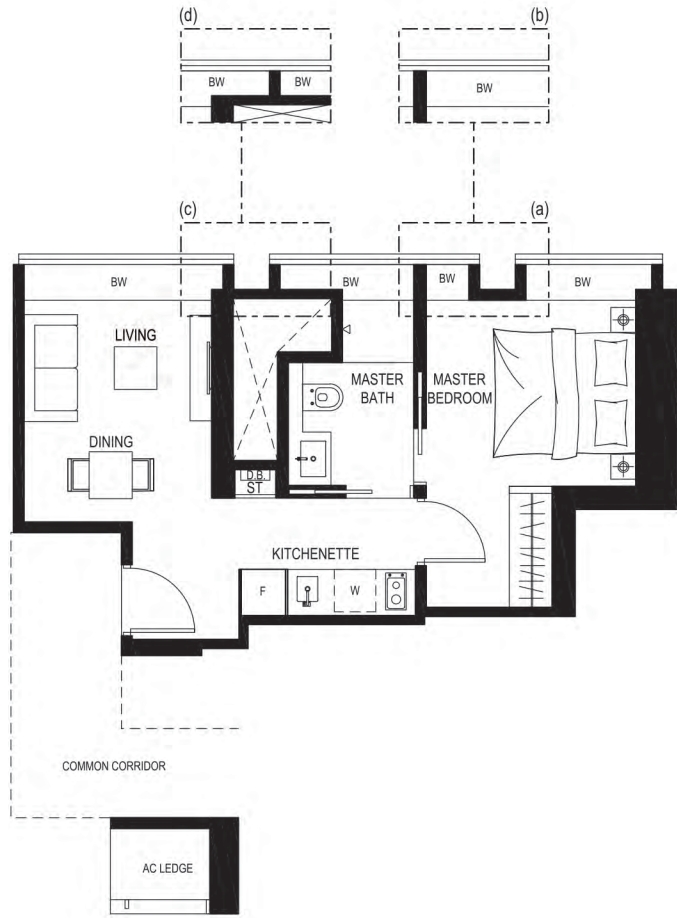


(a) Applicable to: #02-03 to #03-03 (b) Applicable to: #04-03

Area includes A/C ledge, balcony and void (where applicable). Plans are approximate measurements and are subject to amendments as may be required or approved by relevant authorities.

A4 户型

41 平方米 / 441 平方英尺
#05-02 to #14-02



(a) Applicable to: #05-02 to #08-02 (b) Applicable to: #09-02 to #14-02

(c) Applicable to: #05-02 to #08-02, #14-02 (d) Applicable to: #09-02 to #13-02

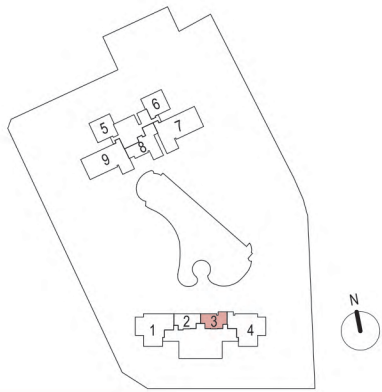
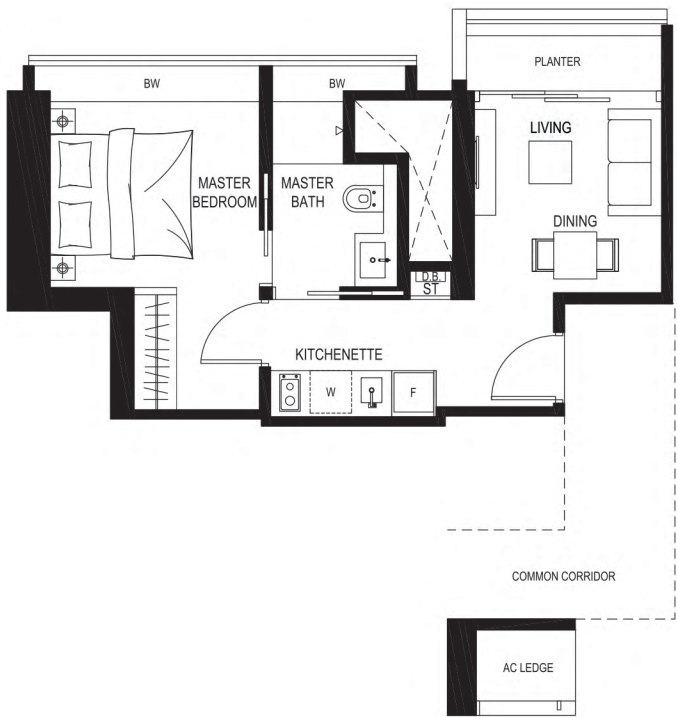
Area includes A/C ledge, balcony and void (where applicable). Plans are approximate measurements and are subject to amendments as may be required or approved by relevant authorities.

1-Bedroom



A5 户型

41 平方米 / 441 平方英尺
#05-03 to #07-03



Area includes A/C ledge, balcony and void (where applicable). Plans are approximate measurements and are subject to amendments as may be required or approved by relevant authorities.

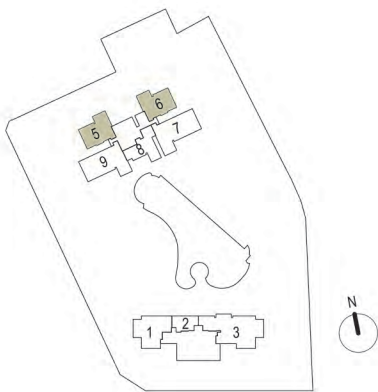


2-Bedroom



B1 户型

81 平方米 / 872 平方英尺
#16-05 to #20-05
#24-05 to #28-05
#32-05 to #35-05
#16-06* to #20-06*
#24-06* to #28-06*
#32-06* to #35-06*



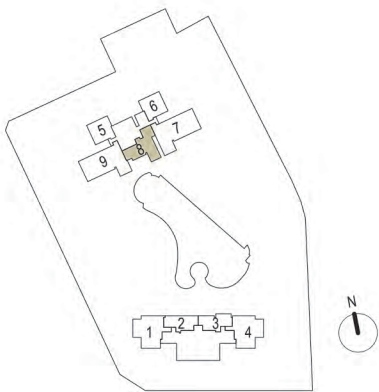
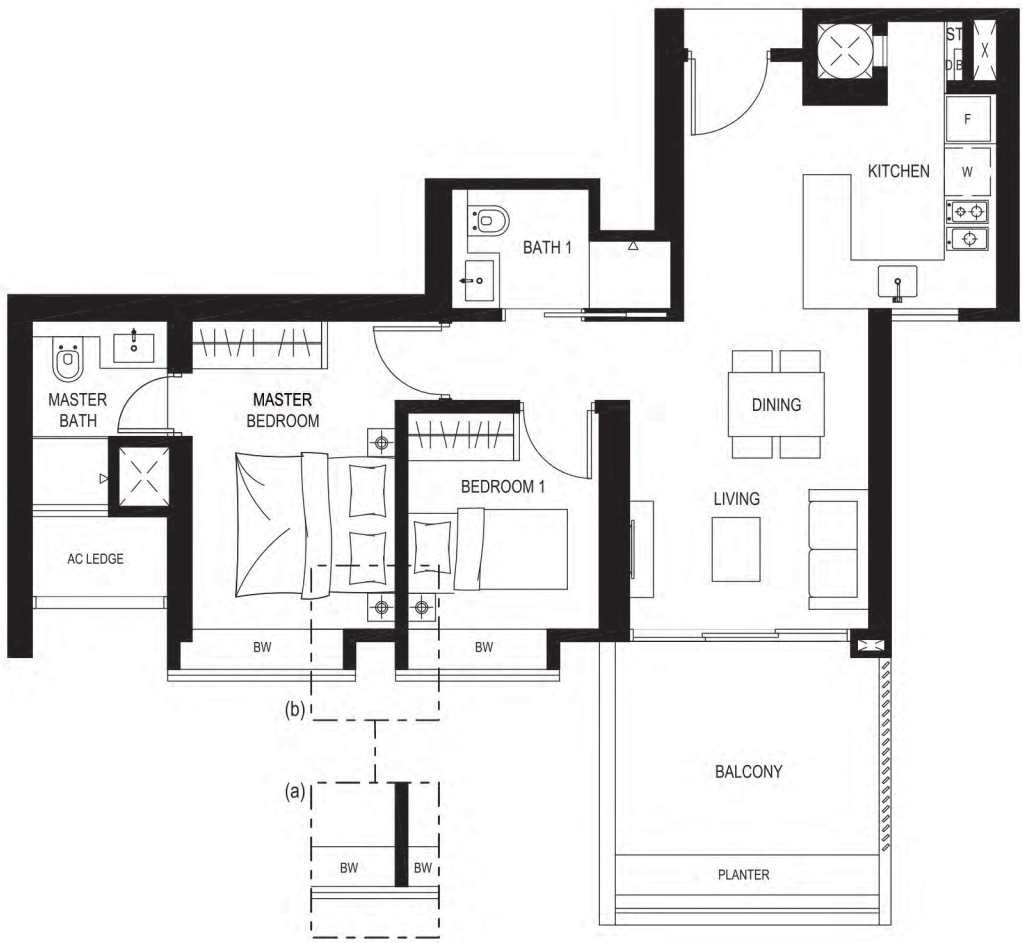
(a) Applicable to: #16-05 to #20-05, #24-05 to #28-05, #32-05 to #35-05, #24-06* to #27-06*, #32-06* to #35-06*
(b) Applicable to: #16-06* to #20-06*, #28-06*
Note: - handed/ mirrored units not shown *represent mirrored unit
Area includes A/C ledge, balcony and void (where applicable). Plans are approximate measurements and are subject to amendments as may be required or approved by relevant authorities.

2-Bedroom



B2 户型

75 平方米 / 807 平方英尺
#02-08 to #35-08



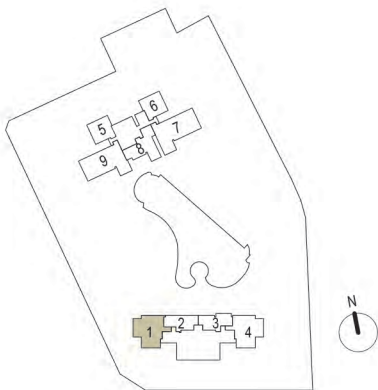
(a) Applicable to: #02-08 to #15-08, #21-08 to #24-08, #30-08 to #35-08
(b) Applicable to: #16-08 to #20-08, #25-08 to #29-08
Area includes A/C ledge, balcony and void (where applicable). Plans are approximate measurements and are subject to amendments as may be required or approved by relevant authorities.

2-Bedroom



B3 户型

97 平方米 / 1044 平方英尺
#02-01 to #04-01



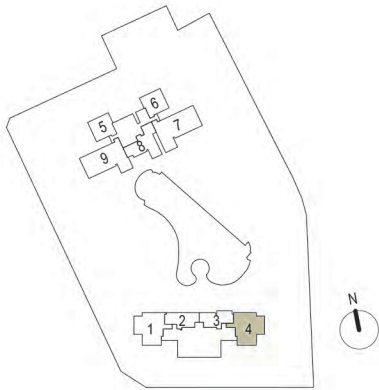
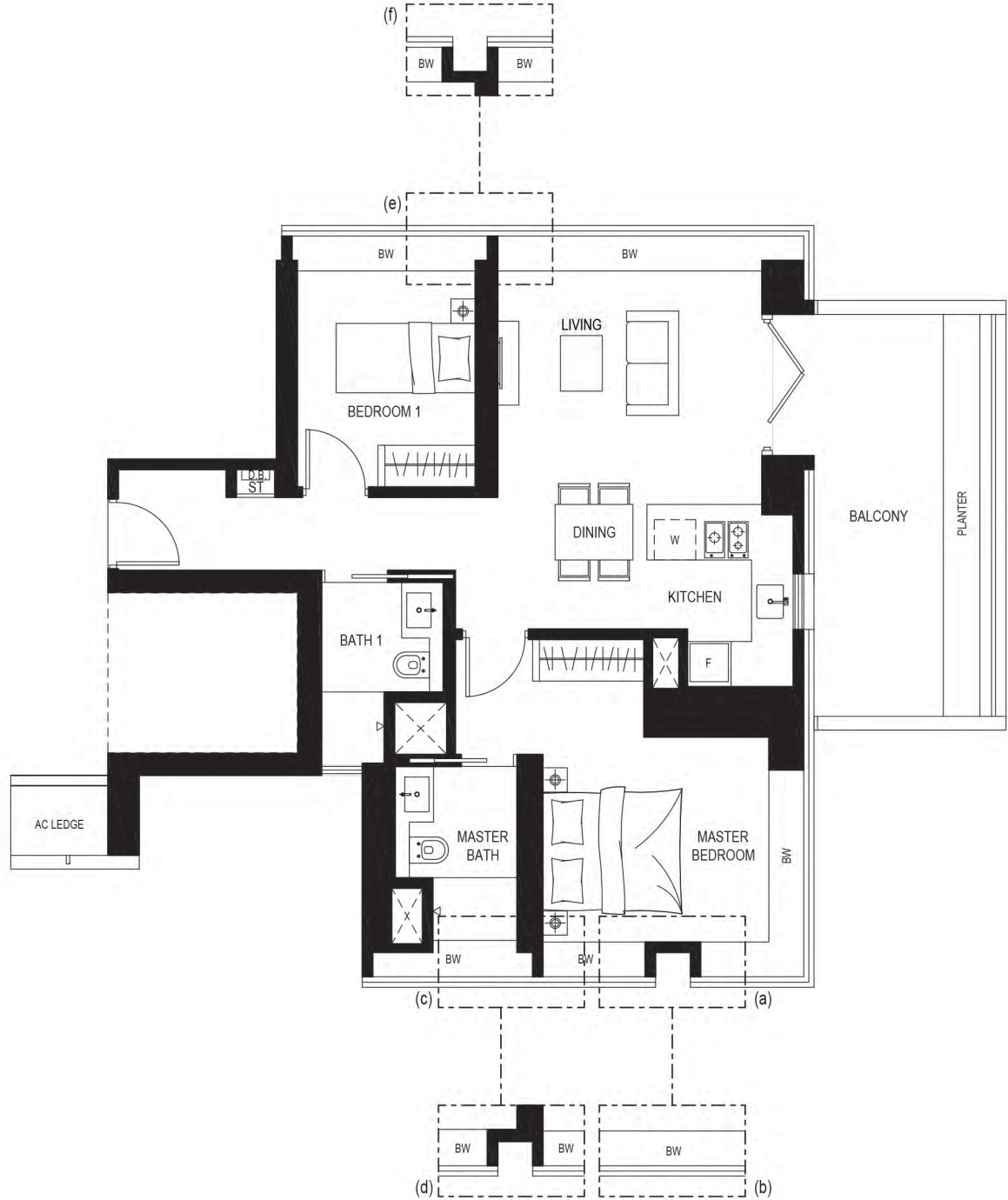
(a) Applicable to: #02-01 & #04-01 (b) Applicable to: #03-01 (c) Applicable to: #02-01
(d) Applicable to: #03-01 to #04-01 (e) Applicable to: #03-01 to #04-01 (f) Applicable to: #02-01
Area includes A/C ledge, balcony and void (where applicable). Plans are approximate measurements and are subject to amendments as may be required or approved by relevant authorities.

2-Bedroom



B4 户型

97 平方米 / 1044 平方英尺
#02-04 to #04-04



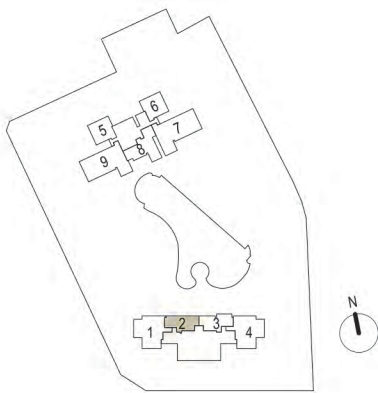
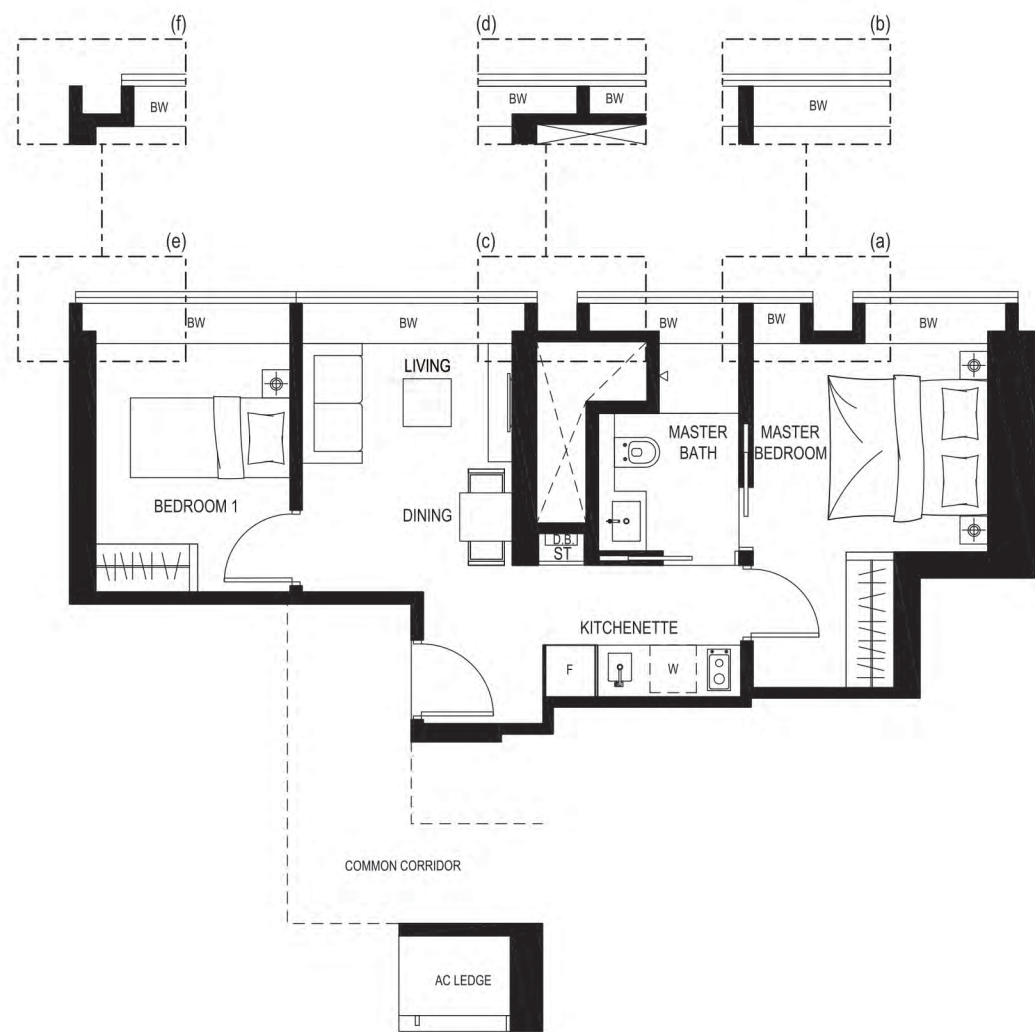
(a) Applicable to: #02-04 to #03-04 (b) Applicable to: #04-04 (c) Applicable to: #02-04 to #03-04
(d) Applicable to: #04-04 (e) Applicable to: #02-04 to #03-04 (f) Applicable to: #04-04
Area includes A/C ledge, balcony and void (where applicable). Plans are approximate measurements and are subject to amendments as may be required or approved by relevant authorities.

2-Bedroom



B5 户型

51 平方米 / 549 平方英尺
#15-02 to #27-02



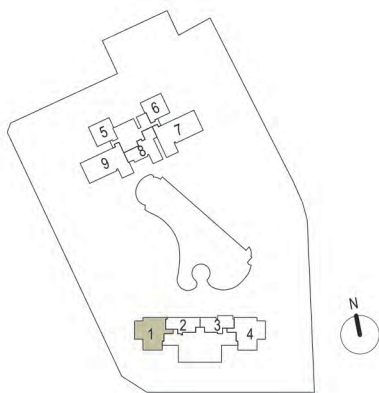
(a) Applicable to: #20-02 to #24-02 (b) Applicable to: #15-02 to #19-02, #25-02 to #27-02 (c) Applicable to: #15-02 to #24-02
(d) Applicable to: #25-02 to #27-02 (e) Applicable to: #19-02 to #24-02 (f) Applicable to: #15-02 to #18-02, #25-02 to #27-02
Area includes A/C ledge, balcony and void (where applicable). Plans are approximate measurements and are subject to amendments as may be required or approved by relevant authorities.

2-Bedroom



B6 户型

97 平方米 / 1044 平方英尺
#15-01 to #27-01



(a) Applicable to: #15-01 to #18-01, #20-01 to #24-01 (b) Applicable to: #19-01, #25-01 to #27-01 (c) Applicable to: #15-01 to #24-01
(d) Applicable to: #25-01 to #27-01 (e) Applicable to: #19-01 to #27-01 (f) Applicable to: #15-01 to #18-01
Area includes A/C ledge, balcony and void (where applicable). Plans are approximate measurements and are subject to amendments as may be required or approved by relevant authorities.

3-Bedroom



C1 户型

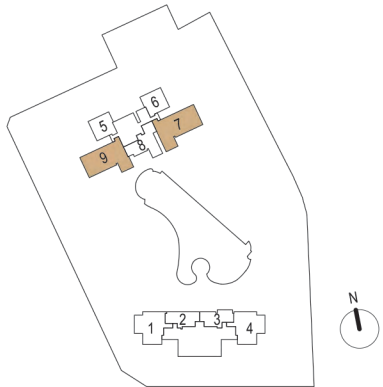
121 平方米 / 1302 平方英尺
#02-07* to #35-07*
#02-09 to #35-09



Actual Photo



(a) Applicable to: #02-09 to #07-09, #14-09 to #23-09, #28-09 to #31-09, #08-07* to #15-07*, #21-07* to #24-07*, #30-07* to #35-07*
(b) Applicable to: #08-09 to #13-09, #24-09 to #27-09, #32-09 to #35-09, #02-07* to #07-07*, #16-07* to #20-07*, #25-07* to #29-07*
(c) Applicable to: #02-09 to #07-09, #13-09 to #23-09, #28-09 to #31-09, #08-07* to #15-07*, #21-07* to #24-07*, #29-07* to #35-07*
(d) Applicable to: #08-09 to #12-09, #24-09 to #27-09, #32-09 to #35-09, #02-07* to #07-07*, #16-07* to #20-07*, #25-07* to #28-07*
(e) Applicable to: #02-09 to #07-09, #13-09 to #23-09, #28-09 to #31-09, #08-07* to #15-07*, #21-07* to #24-07*, #29-07* to #35-07*
(f) Applicable to: #08-09 to #12-09, #24-09 to #27-09, #32-09 to #35-09, #02-07* to #07-07*, #16-07* to #20-07*, #25-07* to #28-07*
Note : - handed/ mirrored units not shown *represent mirrored unit
Area includes A/C ledge, balcony and void (where applicable). Plans are approximate measurements and are subject to amendments as may be required or approved by relevant authorities.



3-Bedroom

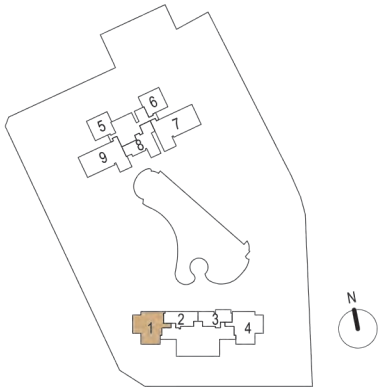


C2 户型

107 平方米 / 1152 平方英尺
#05-01 to #14-01



(a) Applicable to: #05-01 to #08-01, #14-01 (b) Applicable to: #09-01 to #13-01 (c) Applicable to: #05-01 to #08-01, #14-01
(d) Applicable to: #09-01 to #13-01 (e) Applicable to: #05-01 to #13-01 (f) Applicable to: #14-01
(g) Applicable to: #05-01 to #08-01 (h) Applicable to: #09-01 to #14-01
Area includes A/C ledge, balcony and void (where applicable). Plans are approximate measurements and are subject to amendments as may be required or approved by relevant authorities.



3-Bedroom

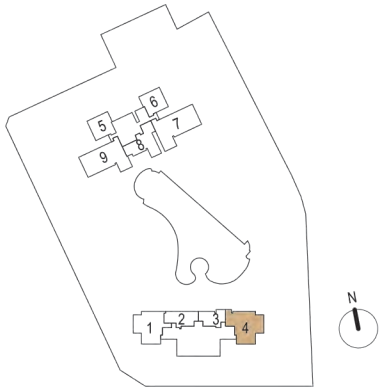


C3 户型

106 平方米 / 1141 平方英尺
#05-04 to #07-04



Area includes A/C ledge, balcony and void (where applicable). Plans are approximate measurements and are subject to amendments as may be required or approved by relevant authorities.



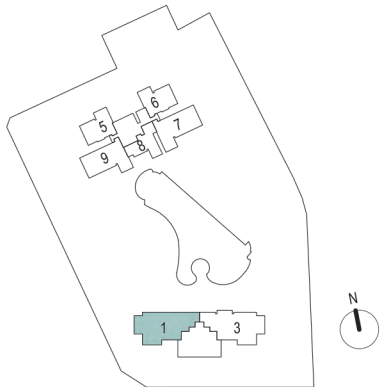
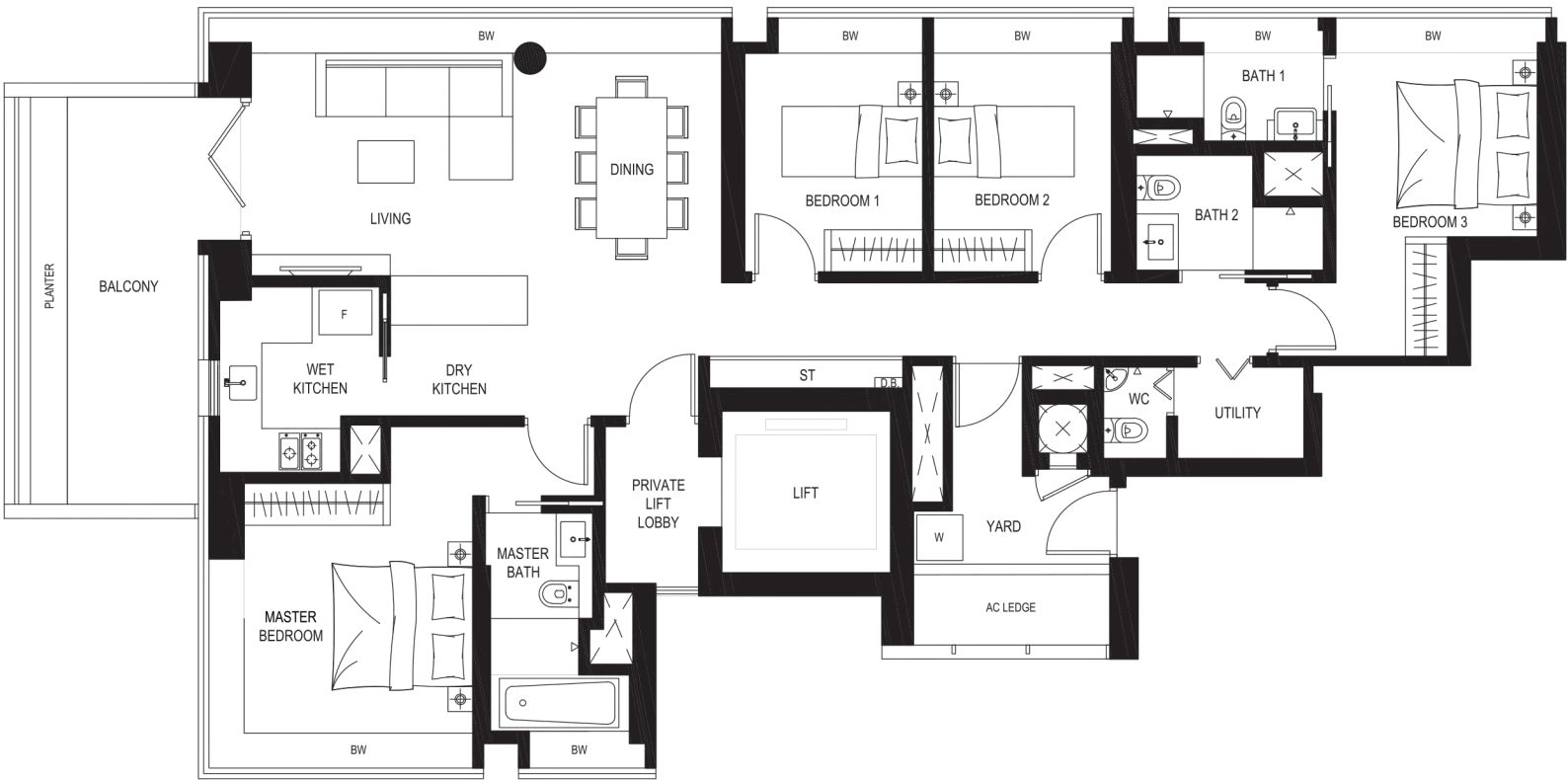
4-Bedroom



D1A 户型
163 平方米 / 1755 平方英尺
#34-01



Actual Photo



Area includes A/C ledge, balcony and void (where applicable). Plans are approximate measurements and are subject to amendments as may be required or approved by relevant authorities.

4-Bedroom

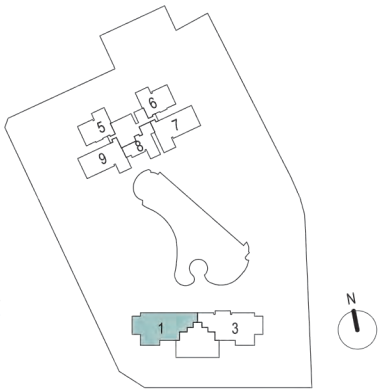


D1B 户型

162 平方米 / 1744 平方英尺
#28-01 to #33-01



(a) Applicable to: #28-01 to #29-01 (b) Applicable to: #30-01 to #33-01 (c) Applicable to: #28-01 to #29-01 (d) Applicable to: #30-01 to #33-01
(e) Applicable to: #28-01 to #29-01 (f) Applicable to: #30-01 to #33-01 (g) Applicable to: #28-01 to #29-01 (h) Applicable to: 30-01 to #33-01
Area includes A/C ledge, balcony and void (where applicable). Plans are approximate measurements and are subject to amendments as may be required or approved by relevant authorities.

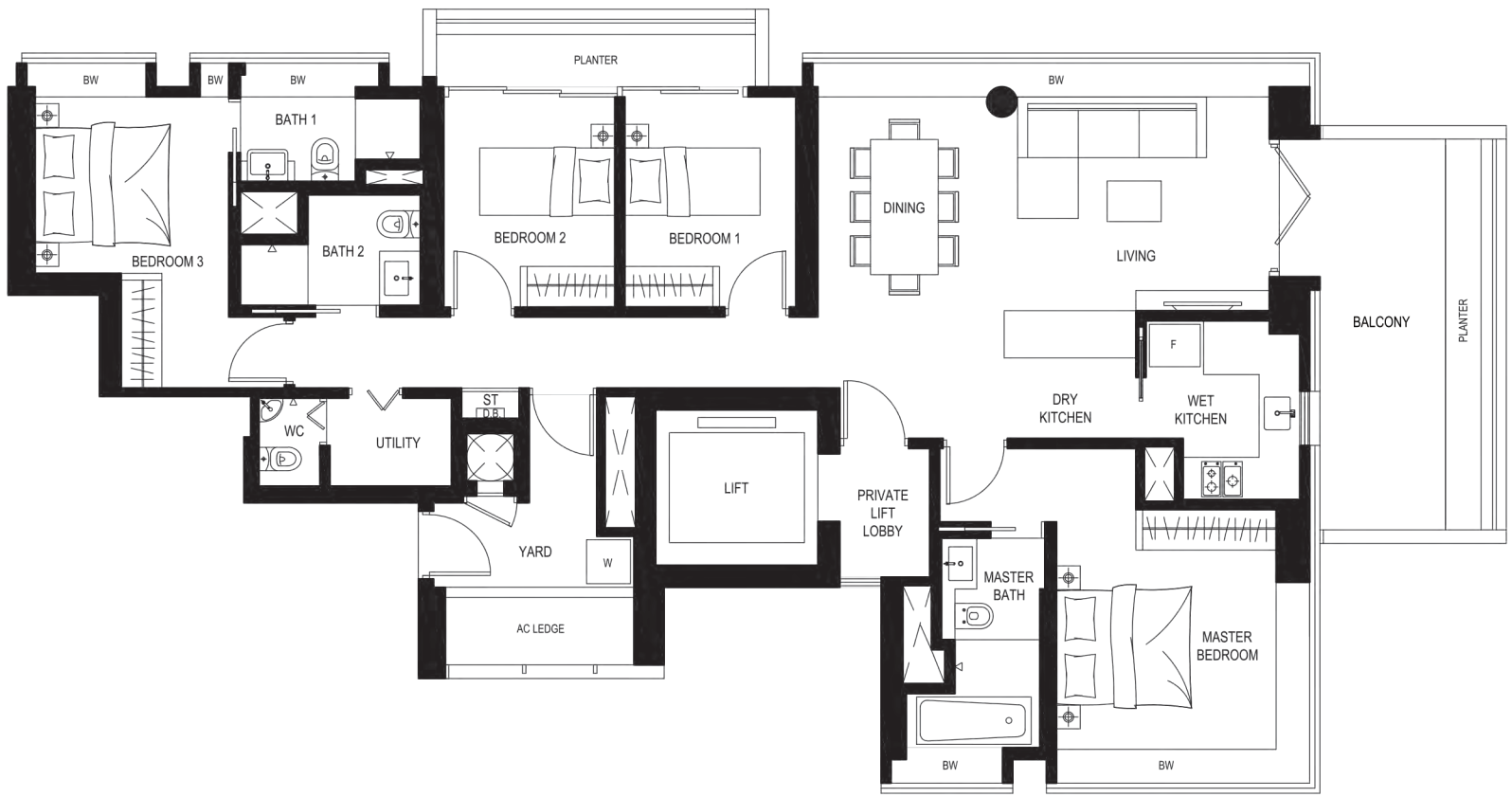


4-Bedroom

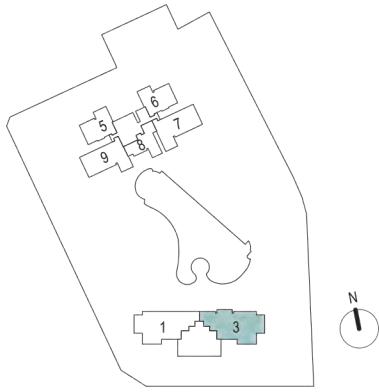


D2A 户型

163 平方米 / 1755 平方英尺
#34-03



Area includes A/C ledge, balcony and void (where applicable). Plans are approximate measurements and are subject to amendments as may be required or approved by relevant authorities.

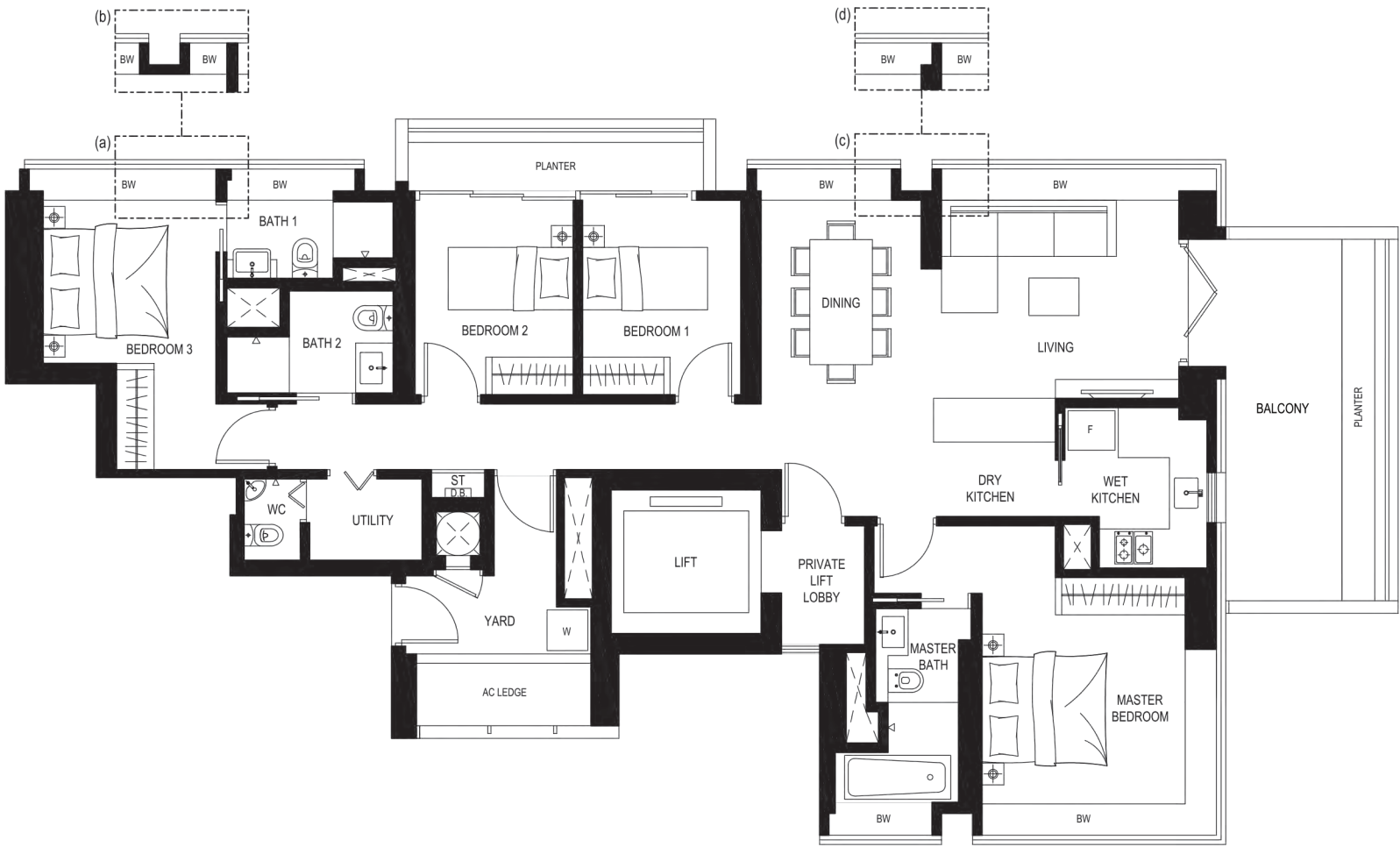


4-Bedroom

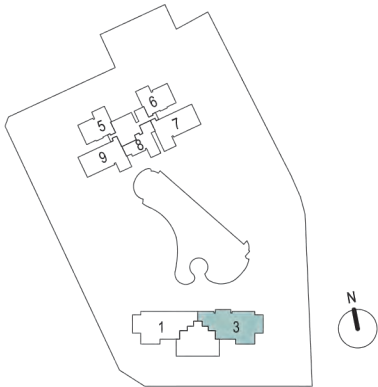


D2B 户型

163 平方米 / 1755 平方英尺
#28-03 to #33-03



(a) Applicable to: #28-03 (b) Applicable to: #29-03 to #33-03 (c) Applicable to: #28-03 (d) Applicable to: #29-03 to #33-03
Area includes A/C ledge, balcony and void (where applicable). Plans are approximate measurements and are subject to amendments as may be required or approved by relevant authorities.



4-Bedroom Dual Key

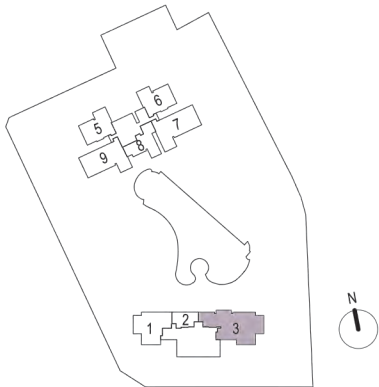


DK1 双钥匙户型

157 平方米 / 1690 平方英尺
#08-03 to #27-03



(a) Applicable to: #08-03 to #09-03, #14-03 to #18-03, #23-03 to #27-03 (b) Applicable to: #10-03 to #13-03, #19-03 to #22-03
(c) Applicable to: #08-03, #14-03 to #18-03, #23-03 to #27-03 (d) Applicable to: #09-03 to #13-03, #19-03 to #22-03
(e) Applicable to: #08-03, #20-03 to #27-03 (f) Applicable to: #09-03 to #19-03 (g) Applicable to: #08-03 to #09-03, #23-03 to #27-03
(h) Applicable to: #10-03 to #22-03
Area includes A/C ledge, balcony and void (where applicable). Plans are approximate measurements and are subject to amendments as may be required or approved by relevant authorities.





BUKIT SEMBAWANG ESTATES LIMITED

Bukit Sembawang Estates Limited (BSEL), 万国公司于1950年起开始涉足房地产业务，并于1968年在新加坡证券交易所上市的开拓者，万国公司业务专注于房地产开发，房地产投资，房地产之相关业务以及扩充其共管公寓和住宅的业务项目。

我们的使命

作为新加坡住宅房地产的先驱之一，万国公司一直致力于提供优质并创新性的建设，以符合顾客以及新一代对生活品质的需求与渴望。

我们的里程碑

半个多世纪以来，万国公司建造了新加坡诸多闻名且成熟的住宅开发项目，包括接地住宅，私人公寓和套房。

我们的承诺

我们重视每一位客户，每一个家庭，我们将继续致力于打造让业主珍爱，欣赏，世代相传的美好家园。

参观实际展示屋 | 8 St Thomas Walk |

Developer: Bukit Sembawang View Pte Ltd (ROC 199507006C) · Developer's Licence No.: C0645 · Tenure: Estate in fee simple · Building Plan No.: BP No. A0909-00001-2007-BP01 dated 6 July 2010, BP No. A0909-00001-2007-BP02 dated 21 August 2012, BP No. A0909-00001-2007-BP03 dated 21 October 2014, BP No. A0909-00001-2007-BP04 dated 21 September 2015, BP No. A0909-00001-2007-BP05 dated 28 October 2016, BP No. A0909-00001-2007-BP06 dated 20 June 2017 · Land Lot: TS21-444C, TS21-445M, TS21-689T · Expected Date of Vacant Possession: 31 July 2019 · Expected Legal Completion: 31 July 2022 · Encumbrances: Nil.

Disclaimer:

Whilst reasonable care has been taken in the preparation of this brochure, the developer cannot be held responsible for any inaccuracies or omissions. The statements, information and depictions shall not be regarded or relied upon as statements or representations of fact, and are subject to such changes as may be required by the developer or the relevant authorities, and cannot form part of an offer or contract. Visual representations, models, showflat, illustrations, photographs, pictures, drawings, displays and art renderings are artists' impressions only, and cannot be regarded as representation of fact. All plans and layouts are not to scale and are subject to change/amendments as may be directed or approved by the relevant authorities. The floor areas indicated in the brochure are approximate measurements only and are subject to final survey. The Sale and Purchase Agreement shall form the entire agreement between the developer and the purchaser and shall in no way be modified by any statements or representations (whether contained in this brochure or otherwise). All information, plans and specifications are current at the time of print and are subject to change as may be required or approved by the developer or the relevant authorities.

All exterior photos in this brochure are by © 2018 Robert Such Photography Pte Ltd.



豪华公寓系列

Paterson Suites

The Vermont on Cairnhill

Skyline Residences

Verdure

有地住宅系列

Nim Collection

Luxus Hills

Watercove

14 & 16 Lengkok Angsa

Mimosa Terrace

Actual Photo